



COLOURS  
*COULEURS*  
COLORI

 **EDGE SURGICAL SOLUTIONS**

# Cool



**Fireproof**  
EN 1021.1-2  
IMO MSC 88/26/ADD.2 PART 8  
(3.1&3.2), ISO 3795



**Bleach resistant**



**No Bisphenol A (BPA)**



**No PBTs (Persistent Bio accumulative and Toxic Chemicals)**



**Bromine-free, no Halogenated Flame Retardants (HFRs)**



**Abrasion resistant**  
100.000 cycles



**Mildew resistant**



**REACH Compliant**  
Non toxic  
Non heavy metals  
No mercury



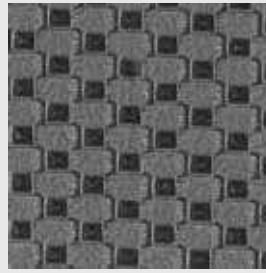
**RoHS Compliant**



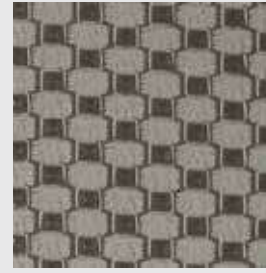
**No significant colour change or stiffening**  
UV coef  $\geq 7$



**Phtalates free**



1.06



1.07



1.08



1.09



1.10



1.11

# Glamour



**Fireproof**  
EN 1021.1-2  
IMO MSC 88/26/ADD.2 PART 8  
(3.1&3.2), ISO 3795



**Bleach resistant**



**No Bisphenol A (BPA)**



**No PBTs (Persistent Bio accumulative and Toxic Chemicals)**



**Bromine-free, no Halogenated Flame Retardants (HFRs)**



**Abrasion resistant**  
100.000 cycles



**Mildew resistant**



**REACH Compliant**  
Non toxic  
Non heavy metals  
No mercury



**RoHS Compliant**



**No significant colour change or stiffening**  
UV coef  $\geq 7$



**Phtalates free**



2.05



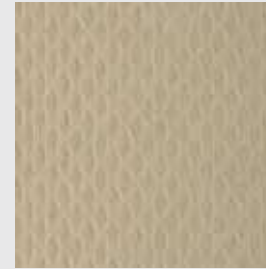
2.06



2.07



2.08



2.09



2.10

# Urban



**Fireproof**  
M2 (NFP 92503)  
BS 5852 crib 5  
B2 (DIN 4102)  
EN 1021.1-2  
IMO A652  
FAR 25853 App F Part1 v12  
CATB 117 E  
CATB 133  
UFAC CLASS 1  
NY/NJ-Port Authority  
AM 18 (NFD 60-013)



**Waterproof**



**Efficacy against bacteria (MRSA)**



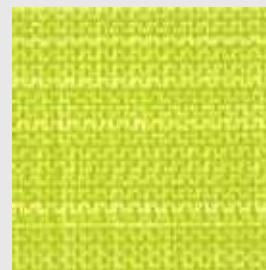
**Abrasion resistant**  
ISO 5470-2  
120.000 cycles (12 KPa)



**Colour fastness to artificial light**  
 $\geq 6$



**Phtalates free**



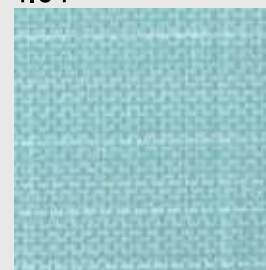
4.01



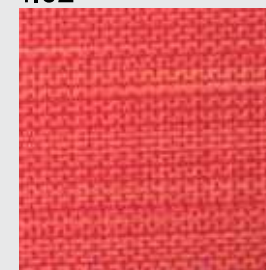
4.02



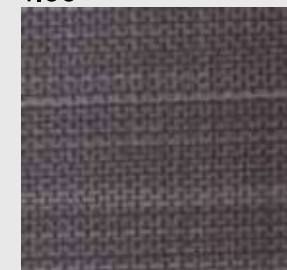
4.03



4.05



4.06



4.07

# Trend



**Fireproof**  
EN 1021.1-2  
IMO MSC 88/26/ADD.2 PART 8  
(3.1&3.2)



**Bleach resistant**



**No Bisphenol A (BPA)**



**No PBTs (Persistent Bio accumulative and Toxic Chemicals)**



**Bromine-free, no Halogenated Flame Retardants (HFRs)**



**Abrasion resistant  
100.000 cycles**



**REACH Compliant**  
Non toxic  
Non heavy metals  
No mercury



**RoHS Compliant**



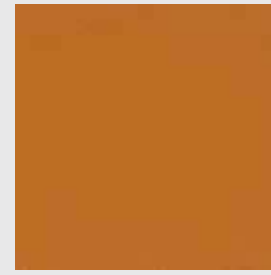
**No significant colour change or stiffening**  
UV coef  $\geq 7$



**Fire resistant additives free**  
**Antimicrobial resistant additive free**  
**Phtalates free**



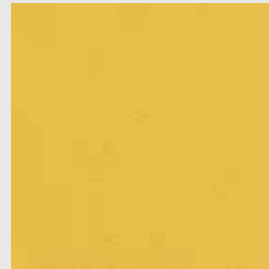
5.04



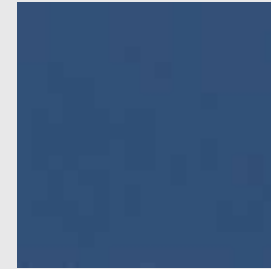
5.05



5.06



5.07



5.08



5.09

# Brio



**Fireproof**  
BS EN 1021-1 and 2  
NF P 92-503 (M2)  
IMO MSC 88/26/ADD.2 PART 8  
(3.1&3.2)  
CA TB 117-2013  
UFAC CLASS 1



**Bleach resistant**



**No Bisphenol A (BPA)**



**No PBTs (Persistent Bio accumulative and Toxic Chemicals)**



**Bromine-free, no Halogenated Flame Retardants (HFRs)**



**Abrasion resistant  
300.000 cycles**



**REACH Compliant**  
Non toxic  
Non heavy metals  
No mercury



**RoHS Compliant**



**No significant colour change or stiffening**  
UV coef  $\geq 7$



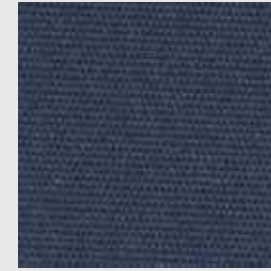
**Phtalates free**



**Anti-microbial  
Mildew resistant**



6.07



6.08



6.09



6.10



6.11



6.12



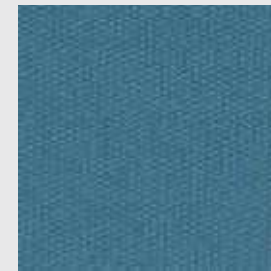
6.13



6.14



6.15



6.16



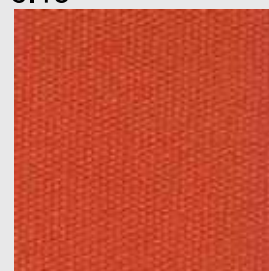
6.17



6.18



6.19



6.20



6.21



6.22

# Premium



## Fireproof

M2 (NFP 92503)  
BS 5852 crib 5  
B2 (DIN 4102)  
EN 1021.1-2  
IMO A652  
FAR 25853 App F Part1 v12  
CATB 117 E  
CATB 133  
UFAC CLASS 1  
NY/NJ-Port Authority  
AM 18 (NFD 60-013)



## Waterproof



Efficacy against bacteria (MRSA)



Abrasion resistant  
ISO 5470-2  
80.000 cycles (12 KPa)



Colour fastness to artificial light  
≥6



Phtalates free



7.07



7.08



7.09



7.10



7.11



7.12

# Classic



## Fireproof

M1 (NFP 92503)  
BS 5852 crib 5  
B2 (DIN 4102)  
EN 1021.1-2  
IMO A652  
FAR 25853 App F Part1 v12  
CATB 117 E  
CATB 133  
UFAC CLASS 1  
NY/NJ-Port Authority  
AM 18 (NFD 60-013)



## Waterproof



Efficacy against bacteria (MRSA)



Abrasion resistant  
ISO 5470-2  
150.000 cycles (12 KPa)



Colour fastness to artificial light  
≥6



Phtalates free



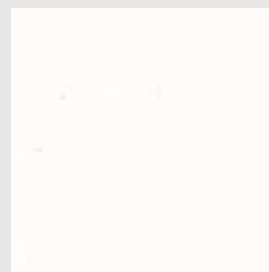
8.30



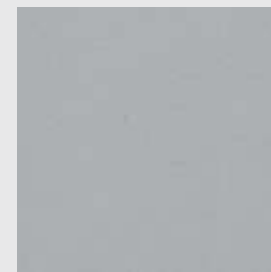
8.31



8.32



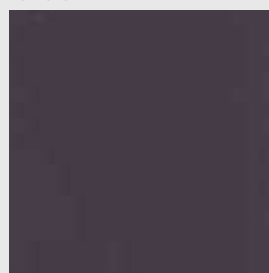
8.33



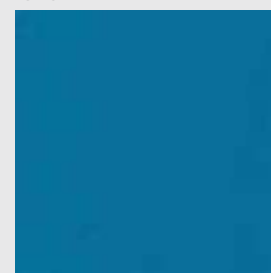
8.34



8.35



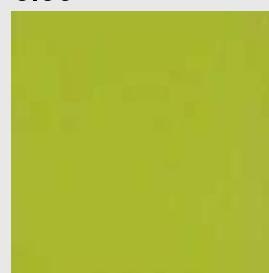
8.36



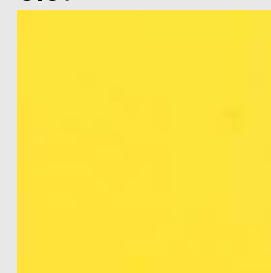
8.37



8.38



8.39



8.40



8.41



Fireproof  
CL 1/IM-M2-CRIB 5



Waterproof



UV resistant, low temp. resistant



Mildew resistant, antibacterial and antimicrobial



Free of heavy metal, formaldehyde, mercury and solvents



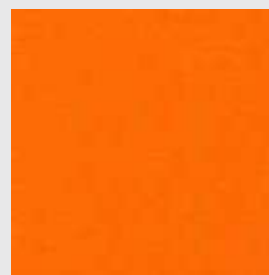
Abrasion resistant  
ISO 5470-2  
100,000 cycles



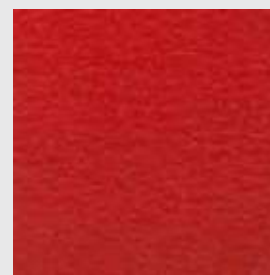
Chemical resistant to acid, bases, alcohol and common solvent



9.03



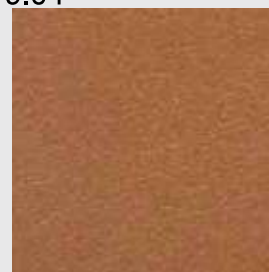
9.04



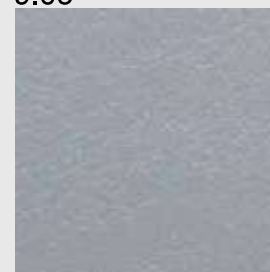
9.05



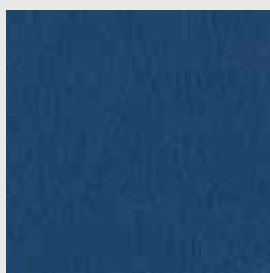
9.06



9.07



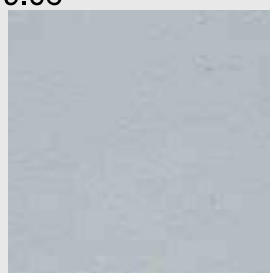
9.08



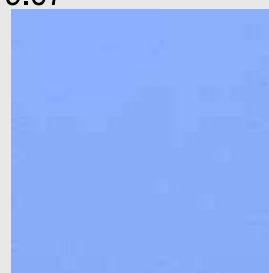
9.09



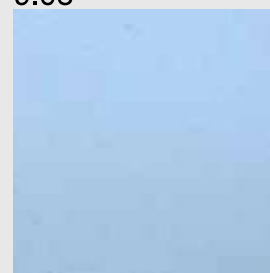
9.10



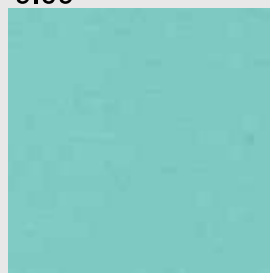
9.11



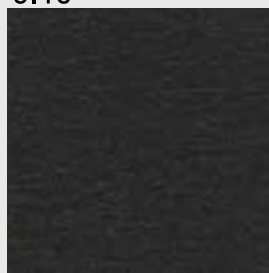
9.12



9.13



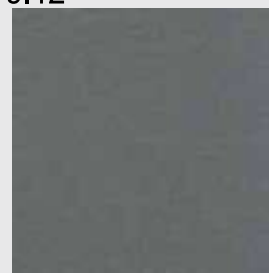
9.14



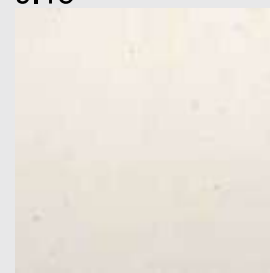
9.15



9.16



9.17



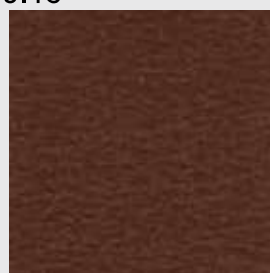
9.18



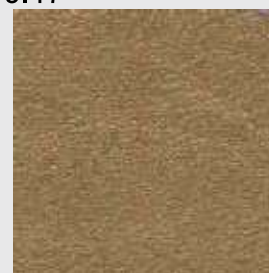
9.19



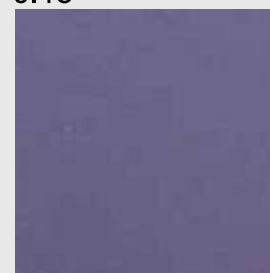
9.20



9.21



9.22



9.23

## Antistatic

Electrically conductive (antistatic) synthetic leather



Fireproof  
GOST



Electric Resistivity  
 $10^4-10^8 \Omega$



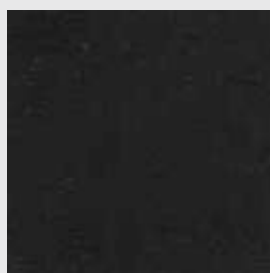
REACH Compliant



Phthalates free



No significant colour change or stiffening  
 $\geq 6$



10.01



Easy clean  
Disinfection

- Clean regularly with a pH neutral soap and a soft cloth.
- Always rinse with clear water.
- Do not use strong detergents, solvent cleaners, polish, wax or patent chemicals.
- Some stains like ball pen, coffee, wine, eosin and also jeans, should be cleaned immediately to avoid any permanent absorption into the fabric.



[www.edgesurgicalsolutions.com](http://www.edgesurgicalsolutions.com)



[edgesurgicalsolutions@gmail.com](mailto:edgesurgicalsolutions@gmail.com)



CE

*“All EDGE SURGICAL SOLUTIONS Medical Equipment is designed ,  
developed and manufactured in Italy”*

## **EDGE SURGICAL SOLUTIONS Srl**

Headquarter: Via Umberto I, 48 73039 Tricase (LE) –ITALY

Production Site: S.S.275 Alessano-Lucugnano KM 17,5  
73031 ALESSANO (LE) - ITALY